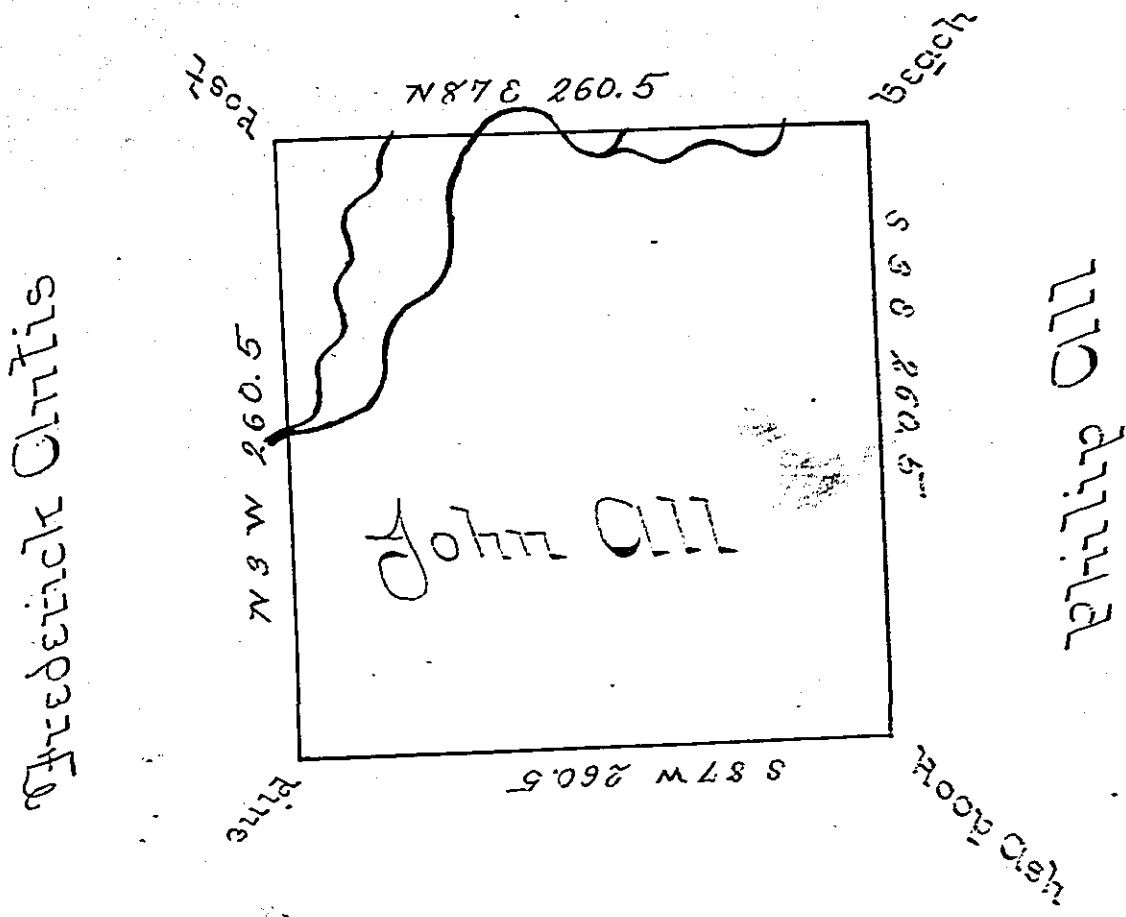


Saml Golly



Marlin Ord

Situate on the Waters of Beaver Creek in District
 No 5 Alleghany County Containing 400^{cs} 16^{ps} and
 Allowance Surveyed the 9 November 1705 in pursu-
 ance of a Warrant granted John Oll 21 April 1707

Ben Stokesy U.S.

Donl Brodhead Secy S.C.

IN TESTIMONY that the above is a copy of the original remaining on file in
 the Department of Internal Affairs of Pennsylvania, made
 conformably to an Act of Assembly approved the 16th day of
 February, 1833, I have hereunto set my Hand and caused
 the Seal of said Department to be affixed at Harrisburg,
 this first day of September 1903.

Grace R. Brown
 Secretary of Internal Affairs.